



Member of the Phoenix Contact Group

R F Series

Shielded Connectors M23 crimp versions



Shielded Connectors M23/Speedcon Series RF

Technical Data



Shell material

Machined components: Copper-Zinc alloy (CuZn) or stainless steel 1.4305
 die cast components: Zinc (GD-Zn)
 Shell plating: Nickel (Ni) plated
 Cable entry: max. 13.2 mm

Insulator

Connector inserts: Polyamid (PA66),

Contacts

Contact material: Copper-Zinc alloy (CuZn)
 Contact plating: Nickel (Ni) with gold (Au) passivated
 Contact termination: crimp type

Sealing

Sealing rings: Fluor rubber (FPM)
 Gaskets: Fluor rubber (FPM)

Temperature

Temperature (long term) Celsius: - 20 °C up to +125°C
 Temperature (long term) Fahrenheit: - 4 °F up to + 257 °F

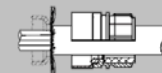
Mating

Female coupling nuts: M23 screw locking or Speedcon
 Male receptacles: M23 screw locking or Speedcon
 Mating cycles: Standard min. 50

Protection

Protection class : IP 67 (mated) depends on which cable gland is used

All connectors with universal shielding material for different jacket and shield diameters.



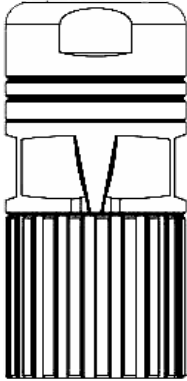

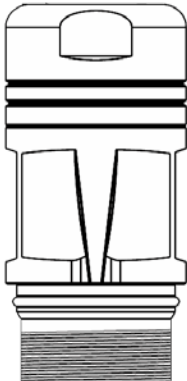
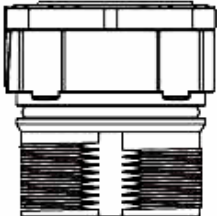
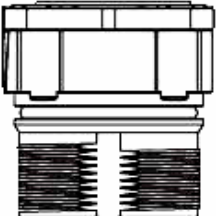
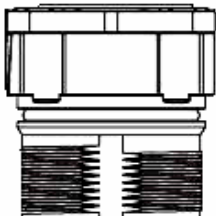
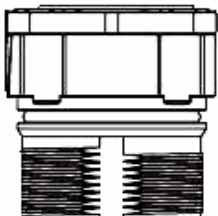
EMC shielding



Crimp inserts			
	12	16	17
Number of positions	12	16	17
Number of contacts	12	16	17
Contact dia. (mm Ø)	1	1	1
Rated current at 25°C (A)	8	8	8
Rated voltage (V)	150	150	150
Test voltage (Volt AC)	1,500	1,500	1,500
Overvoltage category DIN EN 61984-2001	II	II	II
Insulation resistance (Ω)	≥10 ¹²	≥10 ¹²	≥10 ¹²
Contact resistance (mΩ)	≤3	≤3	≤3
Pollution degree acc. to IEC 664-1	2 (3 ¹)	2 (3 ¹)	2 (3 ¹)
Contact resistance (mΩ)	≤3	≤3	≤3
Wiring size AWG	28-18	28-18	28-18


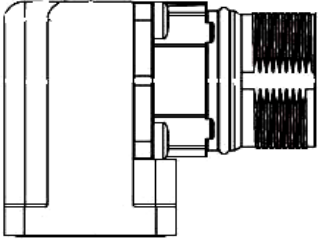
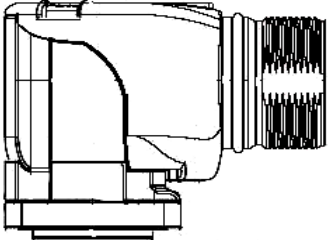
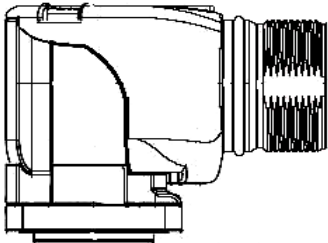
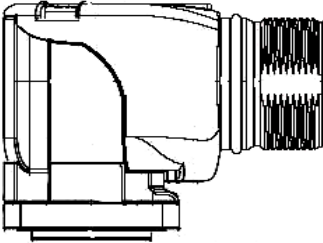
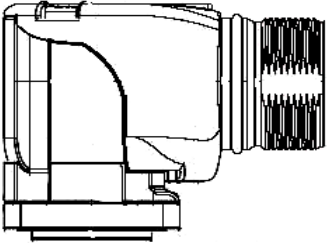
Shielded Connectors M23 Series RF
Shell styles 8, 9, WA, WQ, WB, W4



RF-xxxxxxx8xxx page C-E-07	RF-xxxxxxx9xxx page C-E-08	RF-xxxxxxxWA00 page C-E-09
cable connector straight with coupling nut M23 cable entry max. 13.2 mm universal shielding material	cable connector straight with outside thread M23 cable entry max. 13.2 mm universal shielding material	front mount, straight square flange, axial O-ring flange with 4 x 3.2 mm Ø with outside thread M23
  <p>style 80 (S)</p>	 <p>style 90</p>	 <p>style WA</p>
RF-xxxxxxxWQ00 page C-E-09	RF-xxxxxxxWB00 page C-E-10	RF-xxxxxxxW400 page C-E-10
front mount, straight square flange, axial O-ring flange with 4 x 2.7 mm Ø with outside thread M23	front mount, straight, snap in square flange, axial O-ring flange with 4 x 3.2 mm Ø with outside thread M23	front mount, straight, snap in square flange, axial O-ring flange with 4 x 2.7 mm Ø with outside thread M23
 <p>style WQ</p>	 <p>style WB</p>	 <p>style W4</p>

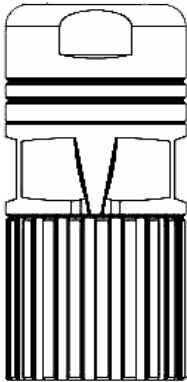
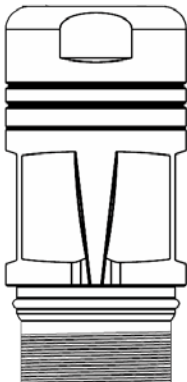
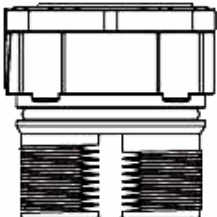
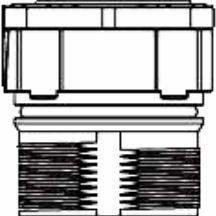
Shielded Connectors M23 Series RF
Shell styles 61, A2, AF, AK, AD, AC



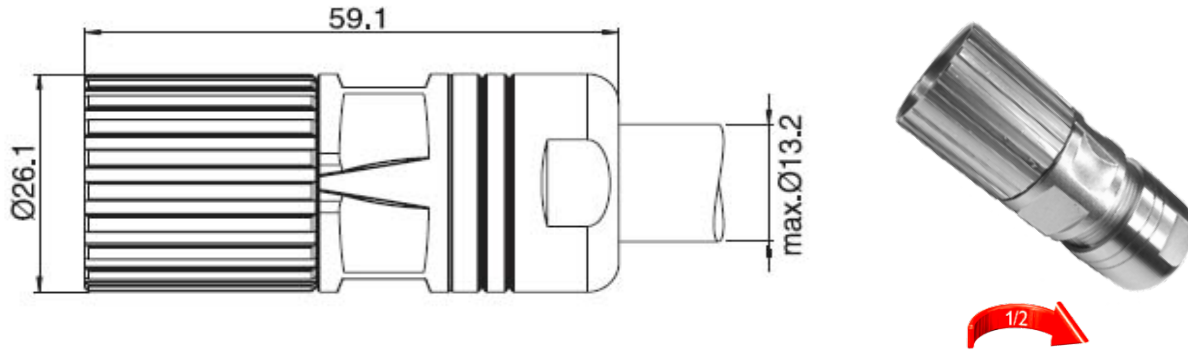
<p>RF-xxxxxxx6100 page C-E-11</p>	<p>RF-xxxxxxxA200 page C-E-12</p>	<p>RF-xxxxxxxAF00 page C-E-13</p>
<p>front mount, straight round flange, axial O-ring mounting thread M20x1.5 mm with outside thread M23</p>	<p>front mount, angled 26x26 mm square flange, axial O-ring flange with 4 x 3.2 mm Ø with outside thread M23</p>	<p>front mount, angled 26x26 mm square flange, axial O-ring flange with 4 x 3.2 mm Ø with outside thread M23</p>
 <p style="text-align: center;">style 61</p>	 <p style="text-align: center;">style A2</p>	 <p style="text-align: center;">style AF</p>
<p>RF-xxxxxxxAK00 page C-E-13</p>	<p>RF-xxxxxxxAD00 page C-E-14</p>	<p>RF-xxxxxxxAC00 page C-E-14</p>
<p>front mount, angled 28x28 mm square flange, axial O-ring flange with 4 x 3.2 mm Ø with outside thread M23</p>	<p>front mount, angled 26x26 mm square flange, axial O-ring flange with 4 x 3.2 mm Ø with outside thread M23</p>	<p>front mount, angled 28x28 mm square flange, axial O-ring flange with 4 x 3.2 mm Ø with outside thread M23</p>
 <p style="text-align: center;">style AK</p>	 <p style="text-align: center;">rotatable</p> <p style="text-align: center;">style AD</p>	 <p style="text-align: center;">rotatable</p> <p style="text-align: center;">style AC</p>



Shielded Connectors M23 Series RF
Shell styles 8V, 9V, WV, WU

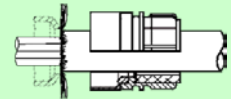
RF-xxxxxxx8Vxx page C-E-17	RF-xxxxxxx9Vxx page C-E-18	RF-xxxxxxxWV00 page C-E-19
cable connector straight with coupling nut M23 cable entry max. 13.2 mm universal shielding material	cable connector straight with outside thread M23 cable entry max. 13.2 mm universal shielding material	front mount, straight square flange, axial O-ring flange with 4 x 3.2 mm Ø with outside thread M23
 <p data-bbox="282 978 448 1003">stainless steel</p> <p data-bbox="289 1052 441 1087">style 8V</p>	 <p data-bbox="714 978 880 1003">stainless steel</p> <p data-bbox="721 1052 873 1087">style 9V</p>	 <p data-bbox="1143 978 1308 1003">stainless steel</p> <p data-bbox="1149 1052 1302 1087">style WV</p>
RF-xxxxxxxWU00 page C-E-19		
front mount, straight square flange, axial O-ring flange with 4 x 2.7 mm Ø with outside thread M23		
 <p data-bbox="282 1738 448 1764">stainless steel</p> <p data-bbox="282 1829 448 1864">style WQ</p>		

Shielded Connectors M23 Series RF
 fits all RF- Bulkheads
 Shell style 80 (S)



Assembly instructions: page B-D-14
 Caps and accessories: pages B-H-01...
 Mounting tools: N/A or counterpart
 Crimp tool for contacts: pages B-B-01...
 Crimp contacts: pages B-C-30.....

All RF-connectors with universal shielding material for different jacket and shield diameters.

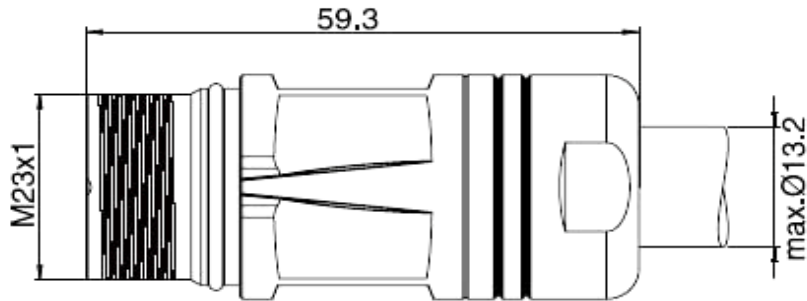


We also deliver as a connector set. Connector with crimp insert - and contacts separate included. Please ask for P/N.



Part Number	RF-	x	x	x	x	x	x	x	x	x	x	x	x
Please fill in the first 7 digits of your desired crimp connector insert (12-17 positions) from pages B-A-58...													
Connectors with integrated strain relief and....													
seal ring for 3.0 - 13.2 mm Ø									8 0 D U				
seal ring for 3.0 - 13.2 mm Ø in speedcon technology									8 0 D U S				
seal ring for 6 - 10 mm Ø									8 0 0 2				
seal ring for 9 - 13.2 mm Ø									8 0 0 3				

Shielded Connectors M23 Series RF
 fits all RF- Connectors with Coupling Nut
 Shell style 90

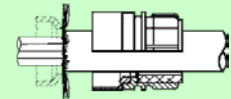


Assembly instructions: page B-D-15
 Caps and accessories: pages: B-H-01...

Mounting tools: N/A

Crimp tool for contacts: pages B-B-01...
 Crimp contacts: pages B-C-30.....

All RF-connectors with universal shielding material for different jacket and shield diameters.



We also deliver as a connector set.
 Connector with crimp insert - and contacts separate included. Please ask for P/N.



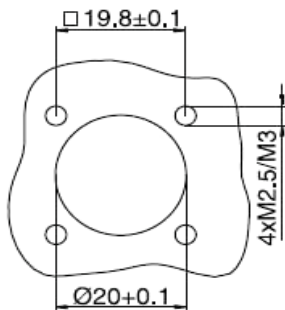
Part Number	RF-	x	x	x	x	x	x	x	x	x	x	x
Please fill in the first 7 digits of your desired crimp connector insert (12-17 positions) from pages B-A-58...												
Connectors with integrated strain relief and....												
seal ring for 3.0 - 13.2 mm Ø									9 0 D U			
seal ring for 6 - 10 mm Ø									9 0 0 2			
seal ring for 9 - 13.2 mm Ø									9 0 0 3			



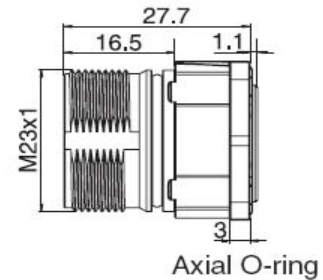
Shielded Connectors M23 Series RF
 fits all RF-Connectors with Coupling Nut
 Shell style WA/WQ (front mount receptacles)

mounting dimensions

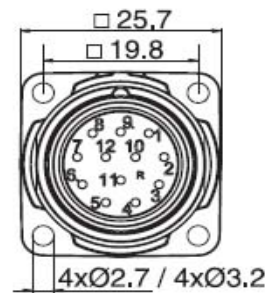
bore holes



side view with
O-ring axial



top view
style WA00
style WQ00



Assembly instructions: page B-D-18
 Caps and accessories: pages B-H-01...

Mounting tools: N/A

Crimp tool for contacts: pages B-B-01...

Crimp contacts: pages B-C-30.....

We also deliver as a connector set.

Connector with crimp insert - and contacts separate included. Please ask for P/N.



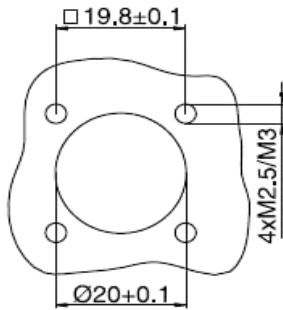
Part Number	RF-	x	x	x	x	x	x	x	x	x	x	x
Please fill in the first 7 digits of your desired connector insert (12-17 positions) from pages B-A-58....												
Connector with axial O-ring, flange with 4 holes 3.2 mm Ø the insert is held with snap ring									W	A	0	0
Connector with axial O-ring, flange with 4 holes 2.7 mm Ø the insert is held with snap ring									W	Q	0	0



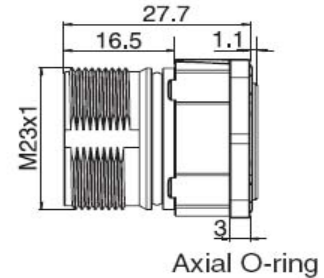
Shielded Connectors M23 Series RF
 fits all RF-Connectors with Coupling Nut
 Shell style WB/W4 (front mount receptacles)

mounting dimensions

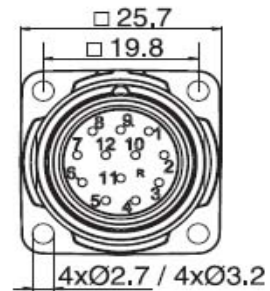
bore holes



side view with
O-ring axial



top view
style WB00
style W400



Assembly instructions: page B-D-19
 Caps and accessories: pages B-H-01...
 Mounting tools: N/A
 Crimp tool for contacts: pages B-B-01...
 Crimp contacts: pages B-C-30.....

We also deliver as a connector set.
 Connector with crimp insert - and
 contacts separate included. Please ask for P/N.



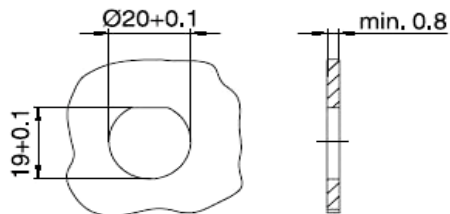
Part Number	RF-	x	x	x	x	x	x	x	x	x	x	x		
Please fill in the first 7 digits of your desired connector insert (12-17 positions) from pages B-A-58....														
Connector with axial O-ring, flange with 4 holes 3.2 mm Ø the insert is snapped into the housing											W	B	0	0
Connector with axial O-ring, flange with 4 holes 2.7 mm Ø the insert is snapped into the housing											W	4	0	0



Shielded Connectors M23 Series RF
 fits all RF-Connectors with Coupling Nut
 Shell style 61 (front mount receptacles)

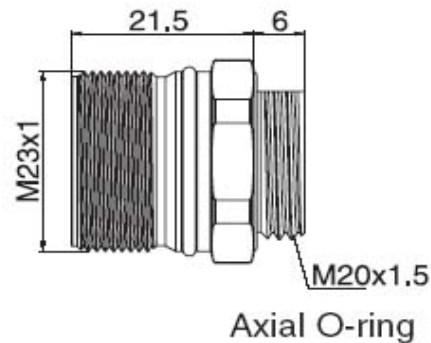
mounting dimensions

bore holes




or thread M20x1.5 mm

side view with
O-ring axial



Assembly instructions: page B-D-13
Caps and accessories: pages B-H-01...
Mounting tools: N/A
Crimp tool for contacts: pages B-B-01...
Crimp contacts: pages B-C-30.....

We also deliver as a connector set.
 Connector with crimp insert - and
 contacts separate included. Please ask for P/N.



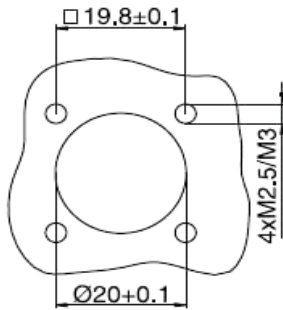
Part Number	RF-	x	x	x	x	x	x	x	x	x	x	x
Please fill in the first 7 digits of your desired connector insert (12-17 positions) from pages B-A-58....												
mounting thread M20x1.5 mm									6	1	0	0
mounting thread M20x1.5 mm plus hex nut									6	1	0	N
mounting thread M20x1.5 mm plus hex nut and washer									6	1	W	N



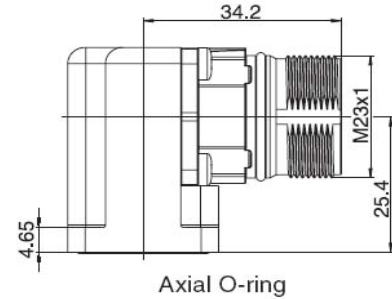
Shielded Connectors M23 Series RF
 fits all RF-Connectors with Coupling Nut
 Shell style A2 (front mount receptacles)

mounting dimensions

bore holes

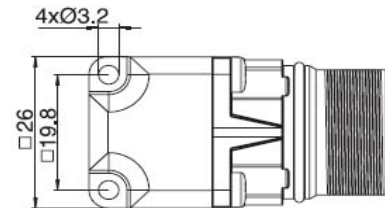


side view with
O-ring axial




Axial O-ring

top view
style A200



Assembly instructions: page B-D-17
Caps and accessories: pages B-H-01...
Mounting tools: N/A
Crimp tool for contacts: pages B-B-01...
Crimp contacts: pages B-C-30.....

We also deliver as a connector set.
Connector with crimp insert - and
contacts separate included. Please ask for P/N.



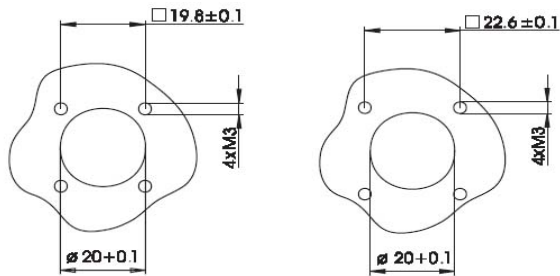
Part Number	RF-	x	x	x	x	x	x	x	x	x	x	x	
Please fill in the first 7 digits of your desired connector insert (12-17 positions) from pages B-A-58....													
Connector with axial O-ring, flange with 4 holes 3.2 mm Ø									A			2 0 0	
connector body angled, fixed													



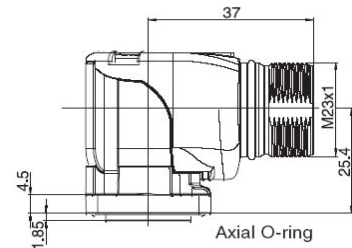
Shielded Connectors M23 Series RF
 fits all RF-Connectors with Coupling Nut
 Shell style AF/AK (front mount receptacles)

mounting dimensions

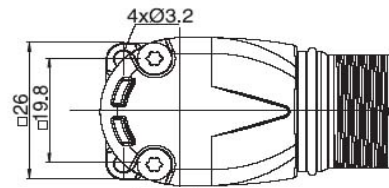
bore holes AF and AK



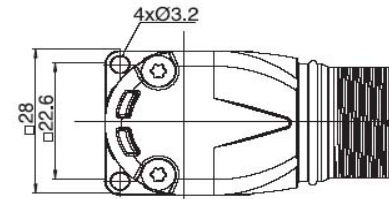
side view with
O-ring axial



top view
style AF00



top view
style AK00



Assembly instructions: page B-D-16
Caps and accessories: pages B-H-01...
Mounting tools: N/A
Crimp tool for contacts: pages B-B-01...
Crimp contacts: pages B-C-30.....

We also deliver as a connector set.
Connector with crimp insert - and contacts separate included. Please ask for P/N.



Part Number	RF-	X	X	X	X	X	X	X	X	X	X	X
Please fill in the first 7 digits of your desired connector insert (12-17 positions) from pages B-A-58....												
Connector with axial O-ring, flange with 4 holes 3.2 mm Ø angled body, fixed, flange 26 x 26 mm									A	F	0	0
Connector with axial O-ring, flange with 4 holes 3.2 mm Ø angled body, fixed, flange 28 x 28 mm									A	K	0	0



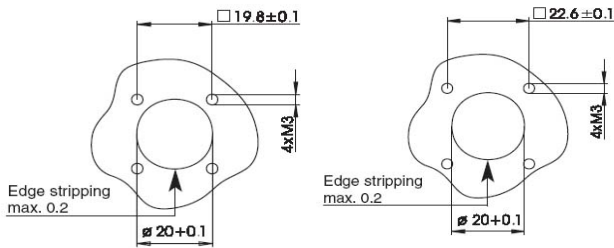


Shielded Connectors M23 Series RF
 fits all RF-Connectors with Coupling Nut
 Shell style AD/AC (front mount receptacles)

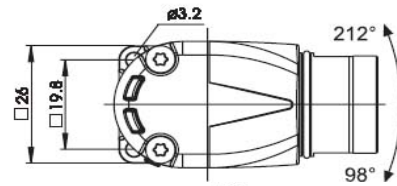
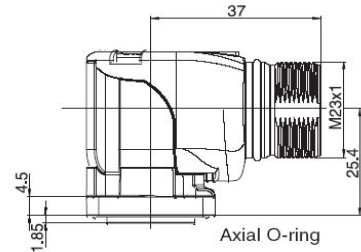
mounting dimensions

bore holes AD and AC

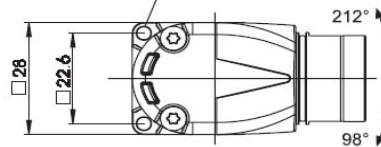
side view with
O-ring axial



top view
style AD00




top view
style AC00



Assembly instructions: page B-D-16
Caps and accessories: pages B-H-01...
Mounting tools: N/A
Crimp tool for contacts: pages B-B-01...
Crimp contacts: pages B-C-30.....

We also deliver as a connector set.
 Connector with crimp insert - and
 contacts separate included. Please ask for P/N.



Part Number	RF-	X	X	X	X	X	X	X	X	X	X	X
Please fill in the first 7 digits of your desired connector insert (12-17 positions) from pages B-A-58....												
Connector with axial O-ring, flange with 4 holes 3.2 mm Ø										A	D	0 0
26 x 26 mm												
Connector with axial O-ring, flange with 4 holes 3.2 mm Ø										A	C	0 0
28 x 28 mm												

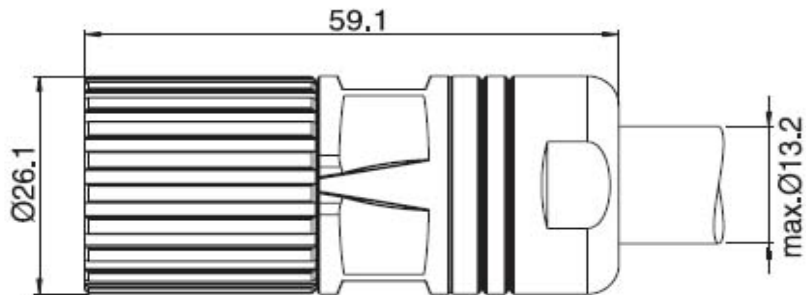


rotatable with 310 °

Shielded Connectors M23 Series RF
 fits all RF- Bulkheads
 Shell style 8V

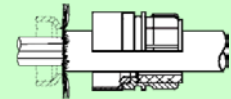


Stainless Steel 1.4305



Assembly instructions: page B-D-14
 Caps and accessories: pages B-H-01...
 Mounting tools: N/A or counterpart
 Crimp tool for contacts: pages B-B-01...
 Crimp contacts: pages B-C-30.....

All RF-connectors with universal shielding material for different jacket and shield diameters.



We also deliver as a connector set.
 Connector with crimp insert - and contacts separate included. Please ask for P/N.

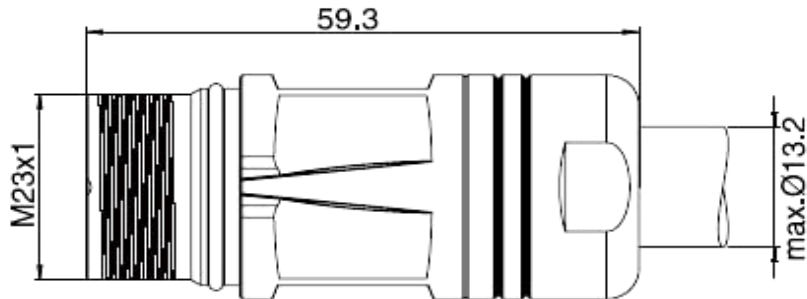


Part Number	RF-	x	x	x	x	x	x	x	x	x	x	x
Please fill in the first 7 digits of your desired crimp connector insert (12-17 positions) from pages B-A-58...												
Connectors with integrated strain relief and....												
seal ring for 3.0 - 13.2 mm Ø									8	V	D	U
seal ring for 6 - 10 mm Ø									8	V	0	2
seal ring for 9 - 13.2 mm Ø									8	V	0	3

Shielded Connectors M23 Series RF
fits all RF- Connectors with Coupling Nut
Shell style 9V



Stainless Steel 1.4305

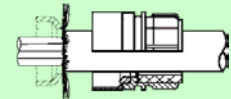


Assembly instructions: page B-D-15
Caps and accessories: pages B-H-01...

Mounting tools: N/A

Crimp tool for contacts: pages B-B-01...
Crimp contacts: pages B-C-30.....

All RF-connectors with universal shielding material for different jacket and shield diameters.



We also deliver as a connector set.
Connector with crimp insert - and contacts separate included. Please ask for P/N.



Part Number	RF-	x	x	x	x	x	x	x	x	x	x	x
Please fill in the first 7 digits of your desired crimp connector insert (12-17 positions) from pages B-A-58...												
Connectors with integrated strain relief and....												
seal ring for 3.0 - 13.2 mm Ø									9	V	D	U
seal ring for 6 - 10 mm Ø									9	V	0	2
seal ring for 9 - 13.2 mm Ø									9	V	0	3

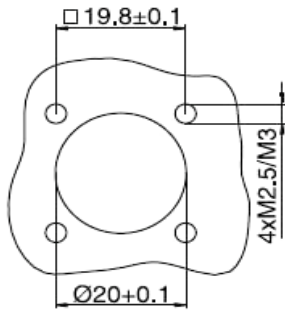


Shielded Connectors M23 Series RF
 fits all RF-Connectors with Coupling Nut
 Shell style WV/WU (front mount receptacles)

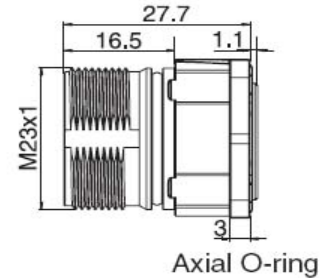
Stainless Steel 1.4305

mounting dimensions

bore holes

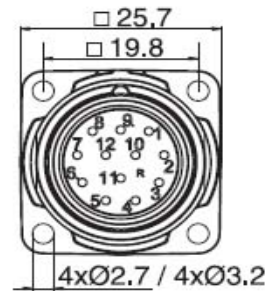


side view with
O-ring axial



Axial O-ring

top view
style WV00
style WU00



Assembly instructions: page B-D-18
 Caps and accessories: pages B-H-01...

Mounting tools: N/A

Crimp tool for contacts: pages B-B-01...
 Crimp contacts: pages B-C-30.....

We also deliver as a connector set.
 Connector with crimp insert - and
 contacts separate included. Please ask for P/N.



Part Number	RF-	x	x	x	x	x	x	x	x	x	x	x
Please fill in the first 7 digits of your desired connector insert (12-17 positions) from pages B-A-58....												
Connector with axial O-ring, flange with 4 holes 3.2 mm Ø the insert is held with snap ring									W	V	0	0
Connector with axial O-ring, flange with 4 holes 2.7 mm Ø the insert is held with snap ring									W	U	0	0